

Newfie News



February 2026

VOLUME 7

ISSUE 6

Yeast Infections In Dogs

Yeast is a live, single-celled microorganism that is part of the fungus family. Small amounts of yeast live naturally on every dog's skin. An infection occurs when yeast excessively builds up in one area.

Yeast infections can occur anywhere on the skin; however, the most common area is your dog's ears, between the toes, or in skin folds. The infection is manageable with early diagnosis and treatment but can lead to serious complications if left untreated.

What Causes a Yeast Infection?

There are many factors that can cause a yeast infection, including an underlying medical condition, weakened immune system, parasites such as fleas, bacterial infections, hormonal issues, or seborrhea, a dermatological condition. Any dog with allergies is also more likely to develop yeast infections. Food or environmental allergies can weaken your dog's skin barrier and disrupt the balance of healthy bacteria. This makes it easier for yeast to spread. Food allergies can trigger inflammation and itching. Antibiotics can also lead to yeast infections as they kill not only harmful bacteria, but beneficial bacteria that keep yeast under control. The most common causes of yeast infections in the ear are water or debris trapped in the ear or food sensitivities.

continued on page 3

Are Some Breeds More Susceptible to Yeast Infections?

Some dog breeds are thought to be genetically predisposed to developing yeast infections, including the West Highland White Terrier, Basset Hound, Cocker Spaniel, Silky Terrier, Australian Terrier, Maltese, Chihuahua, Poodle, Shetland Sheepdog, Lhasa Apso, and Dachshund.

Dogs with floppy ears who swim often, such as Golden Retrievers, Labs, and Newfoundlands, are more likely to get yeast infections. Miniature Schnauzers, Bichon Frise, and Shih Tzu are also more susceptible to infections because the thick hair in their ear canals hampers the airflow which keeps ears dry.

What's Inside

Who's at TNP
Page 2

Recently Adopted
Page 2

TNP Merchandise
Page 3

Who's at TNP

Two-and-a-half -year old **Boss** loves affection. He is good with both dogs and cats but needs a home with a 6 foot fence. Watch for updates in future newsletters and the TNP Facebook page.



Interested in adopting from TNP?

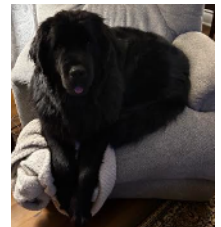
All dogs are placed only in APPROVED homes. Email Nancy for an application: nancy@thatnewfoundlandplace.org. Home checks are also required (virtual or in person).

Keep in mind that TNP places dogs in homes that are in the best interest of the dog, but welcomes applicants to express interest in dogs through TNP Facebook posts.

Recently Adopted



Daisy was adopted by Paul Choquet and Stacie Nicholas of Riverton, Connecticut. Check out future newsletters and the TNP Facebook page for updates.



Two-year-old **Ember** is in her new home with John and Kathleen Guilherme of Mattapoisett, Massachusetts and is adjusting well.

"She fits right in," Kathy said. "She could not be more fabulous. She's amazing. I can't believe how lucky we are." Ember shares her home with two cats and elicits the same reaction from everyone she meets, "beautiful and sweet." The Guilhermes live within walking distance to the beach and are anxious to bring Ember when the weather is warmer.



Ember is the Guilherme's 4th Newfoundland and 3rd rescue. Ember is the first Newfoundland they've had that has not been afraid of the vacuum. Their first Newf was a puppy named Liberty they got 22 years ago, when Kathy turned 50. "I've always loved them," Kathy said. "When we were first married, I had a friend that had one." All of their rescues come through Cathy Derench, first from the Newfoundland Club of New England, then

through That Newfoundland Place. Armani was their first, then Justice, who they had for 10 years. He passed away within a few days of Cathy in June 2024. The Guilhermes have always been impressed with the adoption process at TNP. "I can't think of a negative thing in this whole process," Kathy said. "It's been perfect."

John and Kathleen picked up Ember the day after Christmas and she has completed their household. "She's the best present we ever got," Kathy said.



Yeast Infections in Dogs - continued from page 1

Damage to the eardrum, a polyp, or a mass or tumor in the ear canal can also cause yeast infections.

Location of Yeast Infections in Dogs

The **ear canal** of a dog is L-shaped, dropping down and toward the head. This dark, warm, moist environment is exactly where yeast thrives. The two types of yeast most often found in a dog's ears are *Candida* and *Malassezia*.

Yeast infections can occur in any part of the dog's ear. Watch for these symptoms:

- Scratching and digging at the ear
- Rubbing the head on the floor, walls, or furniture
- Head tilting
- Excessive shaking of the head
- Red, inflamed ear canals
- Loss of balance
- Loss of hearing
- Walking in circles
- Musty odor
- Brown, yellow, or bloody discharge
- Crusted skin or fur on the ear flap
- Hair loss around the base of the ear

It's important to seek veterinary care at the onset of a yeast infection in the ears before it spreads deeper, potentially causing serious pain and complications, including loss of hearing, vestibular imbalance, or neurological damage.

A dog's **paws** are also prime areas for yeast infections because they are constantly exposed to moisture from wet grass, puddles, snow, and swimming. Moisture and dirt can get trapped between the toes and pads. Grass and pollen can trigger allergies and weaken

Continued on page 4

Stay Warm This Winter with a Cathy's Crew Hoodie from TNP

Cathy's Crew is a special project within TNP that ensures elderly or hard to home animals have a beautiful farm in Connecticut with space, resources, and love to safely live out their lives forever. The farm is the life work of animal rescue legend Cathy Derench who was the divine intervention to thousands of animals that found a new beginning because they crossed Cathy's path. All animals that have been rescued, crossed paths, or helped in any way by Cathy are part of Cathy's Crew. Hoodies available in black, pink, and orange. Bibs are available in black.

Hoodies are \$65, bibs are \$25.

Email Krisy@ThatNewfoundlandPlace.org with your size/color and address.



the immune system. When dogs lick their irritated paws, even more moisture is added. Check for these symptoms:

- Excessive licking and/or chewing of the feet
- Redness and irritated skin
- Brown discharge in nailbeds
- Pink staining on the hair around the paws (from the saliva)
- Hair loss

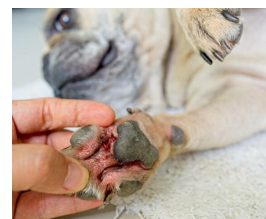


Image credit Tienuskin - Shutterstock

Of course, yeast is only one reason why your Newf may excessively lick his paws (other reasons include anxiety, boredom, injury, parasites, bacteria, or allergies) so be sure to check with your veterinarian to determine the cause and begin proper treatment.

Yeast dermatitis, a **skin** inflammation caused by yeast infections, can appear on any area of a dog's skin, but most often occurs at the site of a rash or around skin folds that can trap moisture (which makes wrinkly breeds, such as the Chinese Shar-Pei, especially vulnerable). Symptoms include:

- Intense itching, licking or chewing
- Red, irritated, inflamed skin
- Red bumps or rashes
- Greasy, crusty, or flaky patches
- Thick skin
- Darker skin color
- Hair loss
- Musty or yeasty smell

Left untreated, a yeast infection of the skin can spread and affect the entire body, including your Newf's face and mouth. In addition, a secondary bacterial infection can accompany the yeast infection.

Diagnosis

Your veterinarian will start with a quick visual and hands on check-up. If your Newf has an ear infection, your vet will likely swab and sniff the ear. Experienced veterinarians will recognize a yeast odor immediately.

Your vet will also take samples from the affected area to confirm the presence of yeast cells and assess the severity of the infection. For recurring yeast, your veterinarian may suggest tests for allergies or other underlying conditions that make yeast harder to control.

Treating Yeast Infections

Ears – Treatment depends on the depth of the infection in the ear canal. Your veterinarian will prescribe a topical antifungal cream for infections of the outer ear. Infection of the middle ear may be treated with antifungal drops or oral medication. A thorough cleaning

Yeast Infection Or Allergies?

Both yeast infections and allergies can cause itching, redness, and irritation. The key difference is in the pattern and the smell.

Yeast infections are often more localized — like constant paw licking or a single itchy ear — and tend to have a telltale musty odor. Allergies usually cause more widespread itching, without a strong odor.

Your dog may present with both allergies and a yeast infection. Allergies can make yeast problems worse.

Yeast Infections in Dogs - continued from page 4

of the ear and ongoing treatment with ear-drying solutions may also be required.

Paws – Your vet may prescribe a disinfectant spray to kill germs, and a topical antifungal lotion or spray to use daily. You will also likely need to use a donut pillow or Elizabethan collar to prevent your Newf from licking her paws so they stay dry while they heal.

Skin – Treatment usually involves an antifungal medication and an antibiotic to treat any bacterial skin infection that may occur along with yeast dermatitis. Baths will likely be part of your Newf's future for up to 12 weeks. Cleansing shampoos can clean greasy skin. A medicated, antifungal shampoo might be used for several baths.

You should see improvement of mild cases of yeast within a week, but deeper skin or ear infections may take several weeks or more to fully clear.

The prognosis for yeast infections is good when you follow your veterinarian's treatments and instructions. Also understanding and treating the root cause - allergies, hypothyroidism, or seborrhea – not just the symptoms is critical, or the yeast infection is likely to return. Yeast infections in dogs are not contagious to other dogs or humans.

The Return of Yeast

Yeast thrives when the skin's natural balance is thrown off, and the cycle will continue until balance is restored. Consider the following if yeast keeps coming back:

Keep ears/paws/skin clean and dry. Thoroughly dry your Newf's ears after swimming and bathing to prevent moisture build-up. Use a gentle ear cleanser once or twice a week to help prevent buildup and keeps yeast from reestablishing itself. Keeping ear hair trimmed on the inside flap will allow air to circulate.

continued on page 6

Home Remedies to Combat Yeast Infections

There are some at home remedies that can help calm yeast overgrowth and support healing, when used in conjunction with prescription treatments and regular cleaning and moisture control. Always check with your vet before trying a new treatment.

Coconut Oil is rich in medium-chain fatty acids (MCFAs), including caprylic and lauric acid, which have been shown to have antifungal effects against yeast in laboratory studies. Coconut oil can be used both topically and internally to support skin health and help control yeast overgrowth. Choose unrefined coconut oil - also called virgin coconut oil - and cold-pressed oil, which uses a method to preserve nutrients.

Apply a thin layer of coconut oil to clean, dry skin once daily, or add ¼ teaspoon per 10 pounds of body weight to your dog's food once a day. Monitor for any increase in greasiness or odor.

Oregano Essential Oil has strong antifungal effects. Dilute first. Mix 1 drop of oregano essential oil with 1 tablespoon of a carrier oil such as coconut or olive oil, then use a cotton ball or pad to apply a very small amount to affected skin once daily. Be sure to stop use if redness or discomfort develops or symptoms worsen. Always check with your veterinarian before applying any essential oil to your dog's skin. Incorrect use can do more harm than good.

Probiotics can restore balance to the digestive system and stop yeast from

continued on page 6

Yeast Infections in Dogs - continued from page 5

Food or environmental allergies and sensitivities can trigger inflammation, which can create a cycle of recurring infections.

An imbalanced digestive system - often due to antibiotics, stress, or poor diet – can affect yeast levels on the skin.

Make sure you complete treatment to eliminate all the yeast. Even after symptoms improve, continue your dog's treatment for several days to avoid regrowth.

Prevention of Yeast Infections in Dogs

Early intervention with your vet can prevent spread of yeast infection of the skin. Keeping your Newf healthy can also help to keep him yeast free. Feed a balanced diet with minimal fillers and processed carbohydrates, since yeast feeds on excess sugars. Consider probiotics and prebiotics to maintain gut balance. Coconut or MCT oil can help inhibit yeast, and Omega supplements can help reduce inflammation and strengthen the skin barrier. Manage allergies or consider testing if infections are recurring. Regular baths help keep your dog's skin clean and balanced. Use a gentle antifungal or oatmeal-based shampoo every few weeks. Be sure to rinse thoroughly and dry completely paying special attention to paws, ears and skin folds.

Resources/More Information:

<https://www.akc.org/expert-advice/health/yeast-infections-in-dogs-what-to-know/>

<https://www.caninejournal.com/dog-yeast-infection-home-remedy/>

<https://www.petmd.com/dog/conditions/skin/yeast-infections-dogs>

<https://www.webmd.com/pets/dogs/yeast-infection-in-dogs-causes-treatment-and-prevention>

Home Remedies to Combat Yeast Infections - continued from page 5

growing systemically, which may be the case if your Newf is experiencing itching, odor, or recurrent infections. High-quality probiotics usually include multiple Lactobacillus strains and a high culture count measured in colony-forming units (CFUs).

Choose a canine-specific probiotic with several Lactobacillus strains and at least 1 billion CFUs per serving. Formulas that also include prebiotics will give you the best results. Give daily to maintain microbial support.

Colloidal silver is sometimes used to help soothe skin wounds or infections and can be effective for yeast infections. It is available in liquids, gels, and sprays. Always purchase from a reputable source, as particle size and purity significantly impact both safety and effectiveness. Sovereign Silver is one trusted dog-friendly brand. Apply to clean, dry skin using a cotton pad once or twice daily.

Cold Weather Reminders

It's been a cold winter in New England with temperatures below average on many days. Even snow-loving Newfs can be affected by the extreme cold. Here are some tips to keep them safe.

Keep them warm – yes, Newfs are designed for cold weather, but on days when the thermometer struggles to get out of the single digits, limit their time outside (this can be a challenge with some Newfs!). Hypothermia and frostbite are real threats for any animal outside too long. And make sure your Newf has a warm place to sleep, away from drafts.

continued on page 7

Cold Weather Reminders - continued from page 6

Before taking a walk, protect paws with boots, wax, or petroleum jelly to protect from rock salt and chemicals. Wipe down your Newf's feet, legs, and belly and check for snow and ice between the toes when you return. Keep the fur between their paws trimmed.

Protect against dehydration by keeping a water bowl filled with fresh water. Add water or broth to your pet's dry food for extra hydration. Consider using a humidifier in your home.

Clean up any antifreeze spills. Just one lick of the fluid can be fatal.

Pets burn extra energy in the wintertime staying warm, so feed your Newf a little more.

Never let your dog off leash during a snowstorm. Dogs can lose their scent in the snow and easily become lost.

Source/More Info: <https://www.asPCA.org/pet-care/general-pet-care/cold-weather-safety-tips>

Thinking of leaving a bequest to TNP?

Donations should be made
payable to:
That Newfoundland Place, Inc.
EIN (Tax ID): 27-2176439

Payment Address:
554 Pucker Street
Coventry, CT 06238

Thank you for your
consideration!

To continue to support Cathy's work & her foundation
please see below.
Thank you for all the generous support.

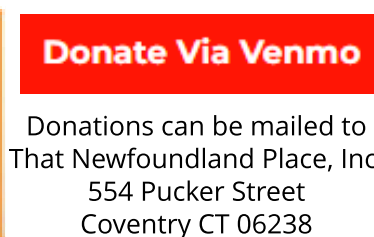
**THAT
NEWFOUNDLAND
PLACE
DONATIONS**



Support TNP through Amex Round-up

<https://www.americanexpress.com/en-us/banking/round-up/frequently-asked-questions/>

Follow us! Support Us! Click on any of the icons below to connect to that source.



That Newfoundland Place Inc. is a nonprofit corporation organized and operated exclusively for charitable purposes. Specifically, this organization has been formed to prevent cruelty to animals. Our mission is to offer quality of life to senior dogs of various breeds, to assist in rescue, rehabilitation, and re-homing of dogs in need, with a focus on Newfoundland dogs, and to provide humane education as related to care and life quality. of animals. Ed Derench, President Newsletter editor and publisher Joanna Dumas: joanna.l.dumas@gmail.com